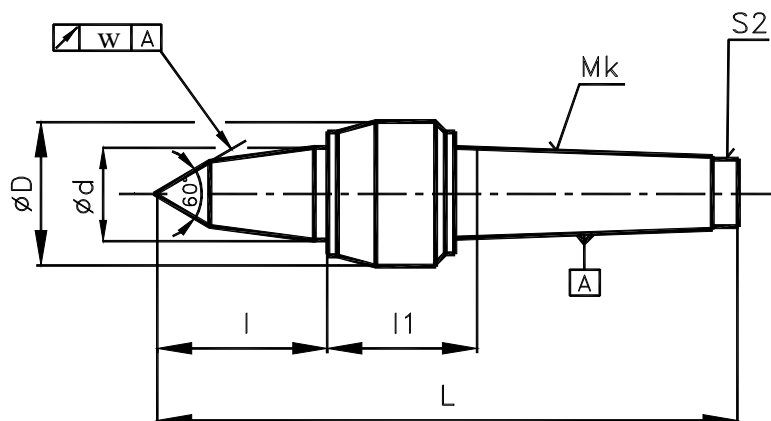


**LIVE CENTRES**
**24 3328 M**

Extended, with 60° apex angle



Live centres are determined for the work on lathes. Its extended clamping part of live centers allows easy access tool to the workpiece. It is advantageous for cutting with tools which have renewable cutting tips and for work on copying lathe. The construction of live centre allows to adjust radial clearance. Live centre has clamping shank MORSE CSN 22 0420 (DIN 228, ISO 296) without clamping thread. The special version is live centre with form and lining of rotary part of live centre based on customer request.

The live center is lubricated by lithium lubricant grease Mogul LV2-WR. It is recommended to lubricate live centers if they are used in extreme conditions at intervals 300 working hours in the quantity lubricant max. 1g through the hole in head case (blinded by S1 screw) and in the quantity of max. 0.5g through the hole at the end of the cone shank (blinded by S2 screw). The disassembly of live center is not recommended.

Mk	Ø D	Ø d	L	l	l1	n	Q	m	w
2	36	20	128.5	24	41	6 000	270	0.36	0.01
3	47	28	167	34	53	5 000	320	0.84	
4	55	35	207.5	49	56,5	4 000	1 000	1.45	
5	69.5	45	259	66	63	3 500	1 600	3.2	
6	89	60	341	82	79	2 500	3 200	7.75	

Dimensions in mm.

Legend:

Mk ... MORSE taper

n ... max.speed (r.p.m)

Q ... max.weight of workpiece at 50 r.p.m. and service life Lh = 500 working hours [kg]

m ... weight [kg]

w ... max. radial run-out [mm]