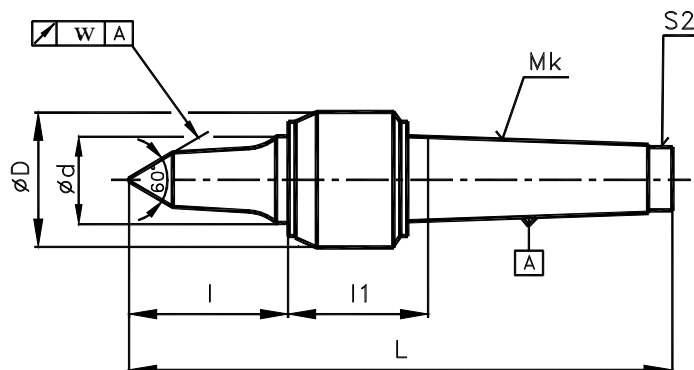


LIVE CENTERS
24 3327

for NC lathes



The live centers are specified for NC lathe. Profile of clamping part allows easy access tool to workpiece, which it is suitable for cutting shaped parts. Design of live center allows to adjust the clearance in radial bearing in front of part of live center. Live centres have Morse cone according to ČSN 2204208 (DIN 228, ISO296) without the clamping thread.

The live center is lubricated by lithium lubricant grease Mogul LV2-WR. It is recommended to lubricate live centers if they are used in extreme conditions at intervals 300 working hours in the quantity lubricant max. 1g through the hole in head case (blinded by S1 screw) and in the quantity of max. 0.5g through the hole at the end of the cone shank (blinded by S2 screw). The disassembly of live center is not recommended.

Mk	$\varnothing D$	$\varnothing d$	L	l	l ₁	n	Q	m	w
2	36	17	130	26	42	6 000	270	0.39	0.005
3	47	25	169.5	33	57	5 000	320	0.89	
4	55	30	206	42	62	4 000	1 000	1.4	
5	70	40	260	54	73	3 500	1 600	3.2	

Dimensions in mm.

Legend:

Mk ... MORSE cone

n ... max. speed [r.p.m.]

 Q ... max. weight of workpiece at 50 r.p.m. and service life L_h = working hours [kg]

m ... weight [kg]

w ... max. radial run-out [mm]