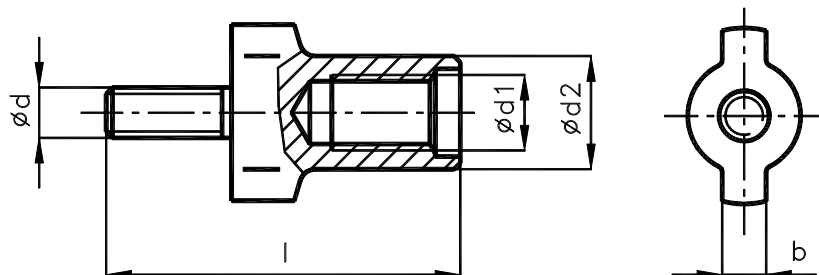


COUPLINGS FOR ADAPTERS
ČSN 24 1483

With Sharp Taper Shanks and Sharp or Morse Taper Bore



The couplings are made of high – grade steel and are treated to the strength of 239 to 269HB. They are intended for adapters according to ČSN 24 1480 a ČSN 24 1481.

Marking	$\varnothing d$	$\varnothing d1$	$\varnothing d2$	b	l	G
40 x 2	M 10	M 12	20	10	58	0.07
50 x 3	M 12	M 16	27	12	76	0.16
50 x 5	M 20		37		86	0.21
55 x 4	M 16	M 24	36	14	97	0.38
55 x 5	M 20				101	0.4
60 x 4	M 16				103	0.45
60 x 5	M 20				101	0.4
50 x 45	M 20	M 16	32	12	95	0.45
60 x 45		M 24	45	14	110	0.85

Dimensions in mm.

Legend:

Marking: ... size of male cone x size of adapter bore

G weight [kg]