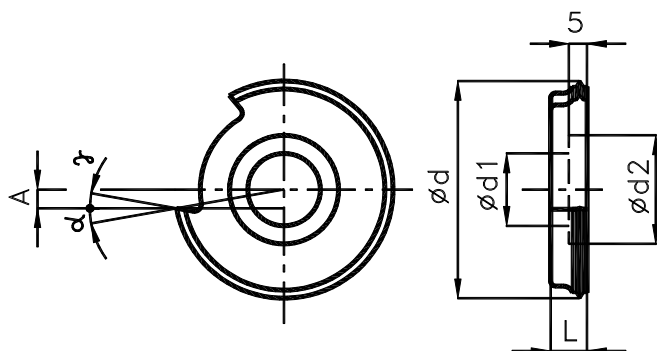


CIRCULAR THREADING TOOLS
ON 22 3352

Shell Type for Whitworth and Pipe Threads



Tools of high – speed steel (HSS) or extra high – speed steel (HSSE) are available. The tools are intended for the cutting of male and female, right – hand threads with possible cutting of threads up to the face. The special design allows for the use of tools in both the right – hand thread cutting. The tools are chucked in the holders – ON 24 1582 and ON 24 1583. In a special version, also tools with $\varnothing d$, $\varnothing d1$, $\varnothing d2$ with α and γ angle

s	L h16	$\varnothing d$ h16	$\varnothing d1$ H7	$\varnothing d2$ H12	α	γ	A	G
28	10	63	20	30	10	10	5.5	0.22
20								
19								
18								
16								
14								
12								
11								
10								
9								
8	11	63	20	30	10	10	5.5	0.24
7								
6								
5								
4 1/2								
4								

Dimensions in mm.

Legend:

s ... thread per inch [mm]
 α ... cutting clearance [°]
 γ ... rake angle [°]
 A ... withdrawal
 G ... weight [kg]