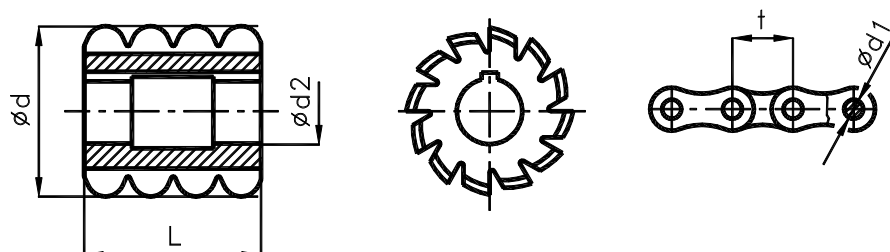


HOBGING CUTTERS
ČSN 22 2720
DIN 8197

For Chain Wheel Teeth



The form relieved cutters of high-speed steel are available. The hobbing cutters are intended for the milling of chain wheels for power transmission and bushing-type chains – ČSN014811 (DIN 8196). The limits of dimensions are stated in table 2. The limits of profile and geometric shape of milling cutters comply with ČSN 222720.

Chain			Cutter				
size	t	$\varnothing d1$	$\varnothing d_{js16}$	$\varnothing d2 H 7$	L	z	G
1	6.35	3.3	56	22	45	12	0.7
2	8	5	63	27	50		0.9
3	9.525	5.08	71		32	56	10
4		6					
5		6.35					
6	12.7	7.75	80	40	71	9	2.2
7		8.51					
8	15.875	10.16	90	50	80	10	3.3
9	19.05	11.91	100				
10		12.07					
11	25.4	15.88	112	40	112	9	4.7
12	31.75	19.05	125				
13	38.1	22.23	140	50	150	9	7.1
14		25.4					7.7
15	44.45	27.94	160	50	180	9	11.7
16		28.58					13.8
17	50.8	29.21	170	50	200	9	17.9
18		39.68					
19	63.5	39.68	190	60	224	9	35.4
20	76.2	47.63	236	60	280	9	35.4

Dimensions in mm.

Legend:

t pitch
 d1 ... diameter of chain roller
 z number of cutter teeth
 G ... weight [kg]