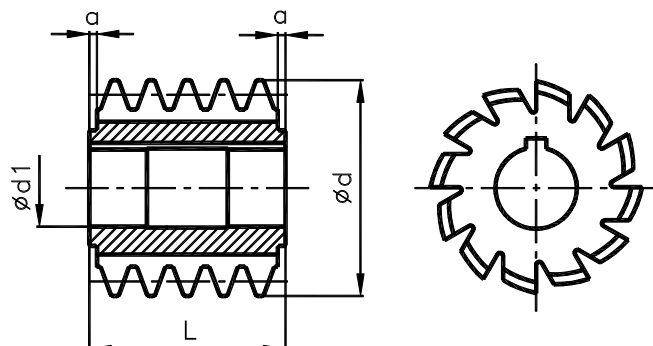


HOBGING CUTTERS
ČSN 22 2551

For Involute Gears with 20° Pressure Angle



Hobbing cutters made of high – speed steel [HSS] are available. In a standard version the cutters of relief ground, right – hand and type, in precision according to ČSN 222507, with the basic profiles II, III, IV according to ČSN 222501, are available. In a special version, we are capable of delivering cutters with modified profiles of teeth.

m	ø d js16	ø d1 H6	L	a	z	G			
1	50	22	32	3	14	0.34			
1.25			40			0.42			
1.5	63	27	45		12	0.80			
1.75			50			0.88			
2			56			0.84			
2.25			63			1.24			
2.5	71	32	71			4	1.32		
2.75							80	1.33	
3	80	32	80				10	1.98	
3.25								90	2.00
3.5								100	2.03
3.75	90	40	90					5	2.70
4									100
4.5	100	40	112						9
5				112	3.10				
5.5				118	4.40				
6	118	50	118	6	4.20				
6.5					125	5.10			
7					132	5.10			
8					150	5.60			
9	125	50	132		8	8.60			
10						150	10.4		
11						160	13.1		
12	170	60	180			9	16.5		
13							200	19.7	
14	180	60	210				9	23.6	
15				224				25.4	
16	200	60	235	9				31.4	
18								280	44.5
20	212	60	250					9	52.9
21									300
22	236	60	310						9
23					320				
24	250	60	320		9	79			
25						280			

Dimensions in mm.

Legend:

m modul

z number of cutter teeth

G weight [kg]